

# Irrigation Tips

## How much do you water?

Grasses in our area need about 1 inch of water every week. By watering thoroughly, no more than every week, you will help your grass develop deeper, more drought tolerant roots during the growing season. If some areas appear dry after sprinkling, hand water those areas instead of increasing the watering time or turning on the sprinkler system again.

## How long should I run my sprinkler?

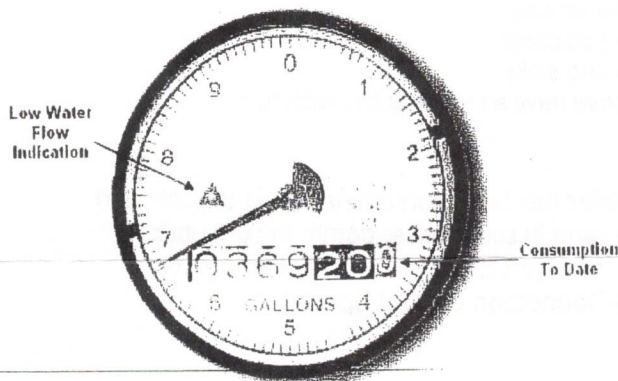
Remember, you want to apply 1 inch of water every week. First, determine how much water your sprinkler applies:

- Set three to five empty cans (tuna or pet food size) at different distances around the sprinkler with the last can near the end of the sprinkler coverage.
- Run the sprinkler for 30 minutes.
- Add the inches of water in all cans and divide the total inches by the number of cans to obtain an average.
- Multiply the average by two to determine how many inches of water your sprinkler applies in one hour.

Now you can figure out how long to run your sprinkler to apply 1 inch. Rainfall counts too, so if it rains, be sure to reduce the amount you apply with your sprinkler by the rainfall amount. Try using a rain gauge to track rainfall amounts in your yard. Also watering your lawn early in the morning or in the evening is most efficient.

# Leak Detection

The little triangle in this picture is the flow detector. Some meters have a little sprocket instead of a triangle. The color of the indicator will depend on the manufacturer of the meter.



**Leak Detection:** If you suspect a water leak, turn off all the faucets in the house. Check your water meter (usually out by the road) to see if the flow detector (a small red or black marker) is moving

- If the flow detector moves, then stops, then moves again, it is a good indication that your toilet valve is leaking or that there may be a very small leak
- If the flow detector moves slowly, it is a good indication that you have a small leak
- If the flow detector moves rapidly, it is a good indication that you have a break in your line- Check for soggy areas in your yard or under your house.

- Once the repair has been made check you meter again to make sure that there are no other leaks

If you don't have a meter then checking for leaks on your property becomes more difficult. You can check for the obvious issues such as leaking faucets (including outside faucets) or toilets. Also if you have an area in your yard that is especially green this could indicate a leak as well. There are also companies that specialize in leak detections. Below are a few of the companies. NWS is not affiliated with these companies but have used such services before with success.

Leak Finders West 360.895.2431

Mt View Locating Services 360.829.5166 or [www.mtviewlocatingservices.com](http://www.mtviewlocatingservices.com)

American Leak Detection 425.747.7118